

Flexible processes  
Fewer errors  
Higher quality

**LPS**  
Local Positioning System

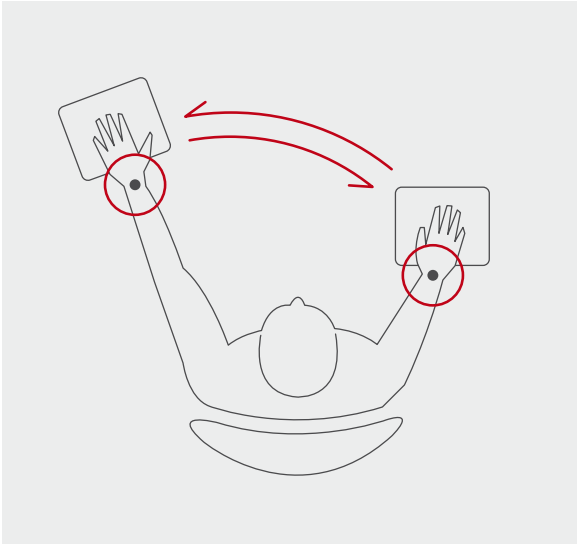


 **sarissa**  
Technology for the manual workplace

# sarissa **QualityCoach**

## Quality at the manual workplace

LPS



### QualityCoach

Coaching accompanies humans in a solution-oriented and targeted fashion to promote self-controlled improvement of their perception, their way of experiencing things and their behavior.

The QualityCoach accompanies your employees in realizing their tasks or solving their problems. Coaching is above all aimed at improving the ability to learn and perform while considering your employees' resources.

The QualityCoach system works like electronic work instructions. First of all, the right work steps are taught in the right order. The system can then track those work steps and can point out random errors. In the event of severe faults, the system forces users to scrap the affected product. The QualityCoach is especially useful as a personal trainer whenever your employees are still in the familiarization phase.



Cable set



Ultrasound marker



Ultrasound receiver unit and action zone

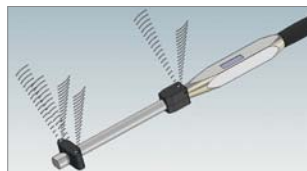
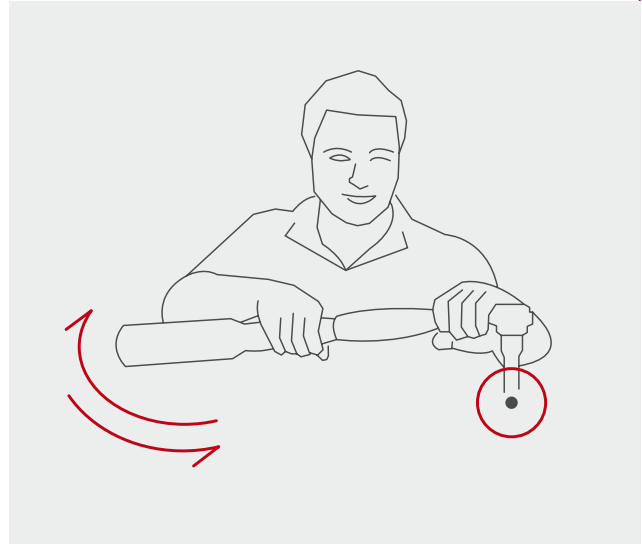
# sarissa **ToolNavigator**

## Monitor tool processes accurately

# LPS

One of the principal applications of the new Local Positioning System (LPS) is as a ToolNavigator. Adapted to the special task in hand, i.e. registering and controlling a tool moving freely in space, the ToolNavigator makes an important contribution to production quality, with unparalleled flexibility in comparison with other resources.

No matter what the tool looks like, be it a power screwdriver, a glue or grease dispenser, a punching tool or a torque wrench, the ToolNavigator prevents faults due to incorrect positioning, a wrong sequence of work steps, or excessively short or long dwell times in one position.



Thanks to appropriate adapters, the ToolNavigator's marker unit can be placed on practically any tool. The receiver unit is situated within earshot above the workplace. Adapted to different situations, two versions of the ToolNavigator are available depending on its action radius.

Without rigid and annoying x-y-z travel units based on distance measuring systems, the ToolNavigator guides workers similarly to drivers guided by a navigation system. Audible signals point out errors in the assembly sequence to the worker and they are corrected on the touchscreen display.



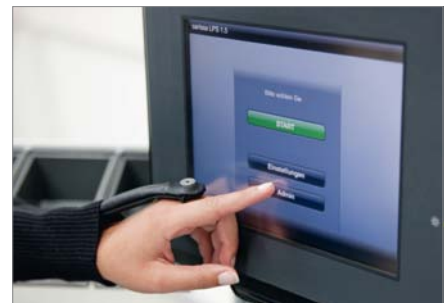
### The receiver unit

A receiver unit above the workplace receives the sound waves and takes care of preprocessing the signals. The data is transferred to the touch PC through a high-speed USB connection.



### The markers

At intervals of a few milliseconds, small markers weighing only a few grams on the worker's hands or the tool send ultrasound signals that are inaudible to human ears.



### The touch PC

As the core of the system, the PC running under Windows 7 Embedded and its color touchscreen measuring 10.4" offer state of the art operating convenience.

# sarissa **L**ocal **P**ositioning **S**ystem

## Overview of the most important functions

# LPS

### Hardware

- Panel PC, N270 Atom 1.6 GHz, fanless
- 2 GB memory, 160 GB hard disk
- 10.4" color touchscreen
- 2x LAN, 4x USB, COM, CF slot
- Integrated, automatic temperature compensation
- 24 V power supply

### Software

- Intuitive, modern user interface and user prompting
- Easy teach-in of positions and the assembly sequence
- Parameterizing instead of programming
- Test functions for the markers and the digital inputs and outputs
- Easy and clear visualization of even complex work processes
- Work instructions can be supported with voice output
- Interfacing to CAQ systems possible
- Software update with CF memory card
- Windows Embedded Standard 7 operating system

There was no need for sarissa's designers and engineers to start from scratch when developing sarissa's LPS. They possess over 10 years of experience in designing and developing powerful sensor and software systems. LPS – whether as ToolNavigator or as QualityCoach – is the result of these years of experience.



#### **Sarissa GmbH**

Ettishofer Str. 8  
88250 Weingarten

Tel. +49 751 509159-00

Fax +49 751 509159-49

Mail: [office@sarissa.de](mailto:office@sarissa.de)

[www.sarissa.de](http://www.sarissa.de)